

**plas@mec**



Series

**HC**

COOLING

**HEC**



**plasmec**

## HEC HIGH EFFICIENCY HORIZONTAL COOLER

The "HEC" range of coolers is the ideal solution for all manufacturing needs in the field of rigid or plasticized PVC DRY-BLEND. Available with standard capacities of up to 8000 litres.

The HEC cooler stands out for its great and proven cooling efficiency, allowing excellent throughput and high standards of quality.

Material can be stored at lower temperature because it is cooled not only superficially but also at the core, and thus has no thermal inertia that will cause packing.

Cleaning and maintenance times are reduced to a minimum, thanks to total opening of the lid, which allows easy access to all internal parts.

Applicable to any type of turbomixer; can be built in special versions and/or with larger capacities to meet specific customer needs.



*High efficiency horizontal  
cooling mixer type "HEC".*

HORIZONTAL COOLING VESSEL

Built entirely of stainless steel as regards the parts in contact with the material, features a double jacket for circulation of cooling water.

LID

Opens along the entire length of the cooling unit, equipped with double jacket for water circulation. Intrinsic safety opening system with lead screw type mechanical actuator.

Safety device only allowing the lid to be opened after the mixer has stopped moving.

Safety limit switch that shuts down the motor on opening.

DISCHARGE

With pneumatically operated butterfly valve.

TEMPERATURE CONTROL

By means of thermocouple located at the side on the side wall of the cooling vessel.

MIXING UNIT

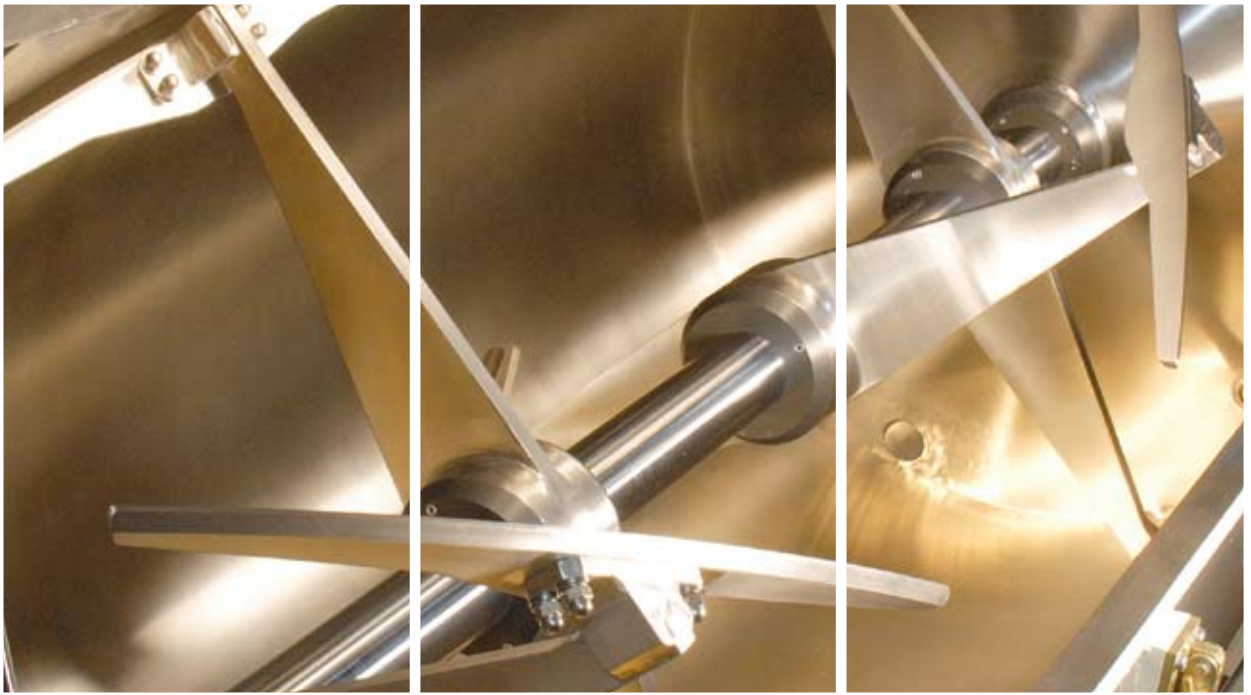
Made of stainless steel, with axial and radial mixing effect, designed to optimise distribution of the hot material on the cooling surfaces.



TYPE	Total capacity L	Motor power KW	
		Standard	Boost
HEC 1000	1000	7,5	11
HEC 1500	1500	11	15
HEC 2500	2500	22	30
HEC 3500	3500	30	37
HEC 4500	4500	45	55
HEC 5500	5500	55	65
HEC 6500	6500	75	90

N.B. The data shown in the table are purely indicative and must be confirmed by PLAS MEC.

Internal detail of cooler.





Series  
**HC**  
**HEC**

*plas* *mec*



Double discharge outlet.

### ADVANTAGES

Discharge of material to a second user.



Filter system.

### ADVANTAGES

Self-cleaning filters for powder suction.



Plug or semi-spherical discharge outlet.

### ADVANTAGES

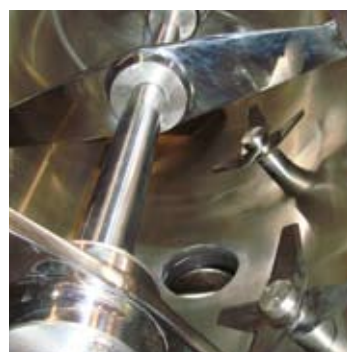
Closure plug suited to the internal shape of the vessel, to be used according to the type of production and/or formulation.



Chopper.

### ADVANTAGES

Elimination and reduction of any lumps in the mix.



Additional inlets for material.

### ADVANTAGES

Dual batch technology, loading regrind, etc.



Installation on load cells.

### ADVANTAGES

Used to determine the amount of material in the cooler.



Sampling valve.

### ADVANTAGES

Allows mix quality control.



Built to ATEX standards.

### ADVANTAGES

Mechanical and electrical components suitable to operate in environments subject to a fire/explosion hazard.



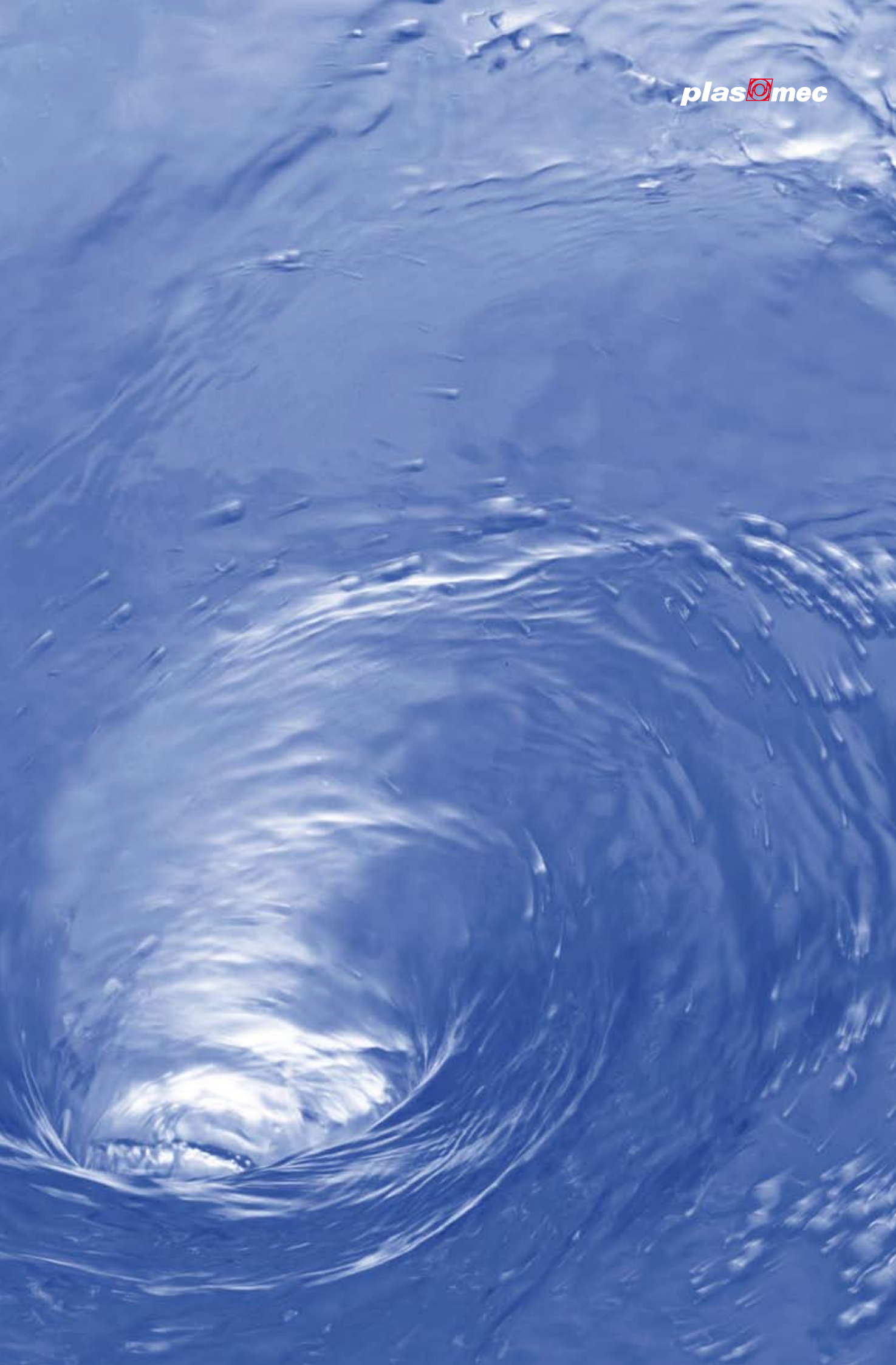
Heat exchanger for cooling water circulation.

### ADVANTAGES

Keeps the water supply circuit separate from circulation, avoiding deposit of materials. recommended when installing pressurized closed loop systems.









**plasma**



Via Europa, 79 - 21015 LONATE POZZOLO  
P.O. BOX 67 (VA) - ITALY  
Tel. +39 0331301648 (r.a.)  
Fax +39 0331301749  
comm@plasmec.it - www.plasmec.it